

-GEARBOX-



JANUARY 2025

HUNTER MODEL AUTO CLUB INC.

CONTACT: Bill Kenchington on Ph (02) 4945 4830 OR Andrew Vile on (02) 4933 5607 in business hours only.

A HAPPY NEW YEAR TO ALL OUR MEMBERS AND FRIENDS.

**** NEXT MEETING TUESDAY 14 JANUARY ****

7.00pm at Frontline Hobbies, Broadmeadow



What a Jaguar used to look like!

Christmas Dinner Meeting:

On Tuesday 10 December 2024 we held our Club Christmas Dinner Meeting in the Auditorium at Edgeworth Sport and Rec Club.

President Andrew welcomed the members and one guest to our dinner meeting.

We had 16 members in attendance with 2 apologies and 1 guest.

Having ordered our meals from the Bistro, we were able to partake of our dinner in the privacy of our normal meeting room.

Here the tables were set up with a Christmas theme thanks to Diane.

With good food and pleasant company, a relaxing and enjoyable evening was had by all.



Model Competitions:

Towards the end of the evening, Competition Organiser Shane presented Voucher Prizes from Frontline Hobbies to the 1st, 2nd and 3rd place getters in the 2024 “Actual” model competition and to the winner in the 2024 “Virtual” model competition (see results below).

We received seven (7) entries for the December “Virtual” Model Competition.

The “Virtual” Model Competition will continue to be held throughout 2025, with the first for the new year to be held on **Tuesday 14 January 2025** (see details below).

We would encourage those of you who have not already joined the Hunter Model Auto Club Group on Facebook to do so. To date we have 33 members in this Group.

If you have any questions in this regard, please don’t hesitate to contact Paul Campbell or myself.

The next “Actual” Model Competition will commence at our February 2025 meeting.

2024 “Actual” Model Competition (Overall Winners):

- 1st Ken McGregor.....179 Points - \$50 Voucher Prize.
- 2ndPaul Campbell.....172 Points - \$40 Voucher Prize.
- 3rdBrian Blyth.....162 Points - \$30 Voucher Prize.



Shane awarding the yearly prizes to Ken, Paul and Brian

2024 “Virtual” Model Competition (Overall Winner):

1st Paul Campbell..... \$30 Voucher Prize.

Results for December 2024 “Virtual” Model Competition:

- 1st- Place - Ernie Williams (Entry A - " Christmas Express " - 18 Points)
- 2nd Place - Mark Jenkins (Entry C -" Mackintosh's ' Quality Street' " - 17 Points)
- 3rd Place - Paul Campbell (Entry D - "Christmas Holidays" - 15 Points)

Next Meeting: **We have been invited again to a Private Opening of the Frontline Hobbies Store, Broadmeadow on Tuesday 14 January 2025 from 7.00pm (Club shirts are desirable for a group photo).**

Next “Virtual” Model Category (January 2025): “Oldest Model You Own” – Any scale one (1) model and one (1) photo only.

(I will send out a reminder email with the entry and voting instructions closer to the deadlines)

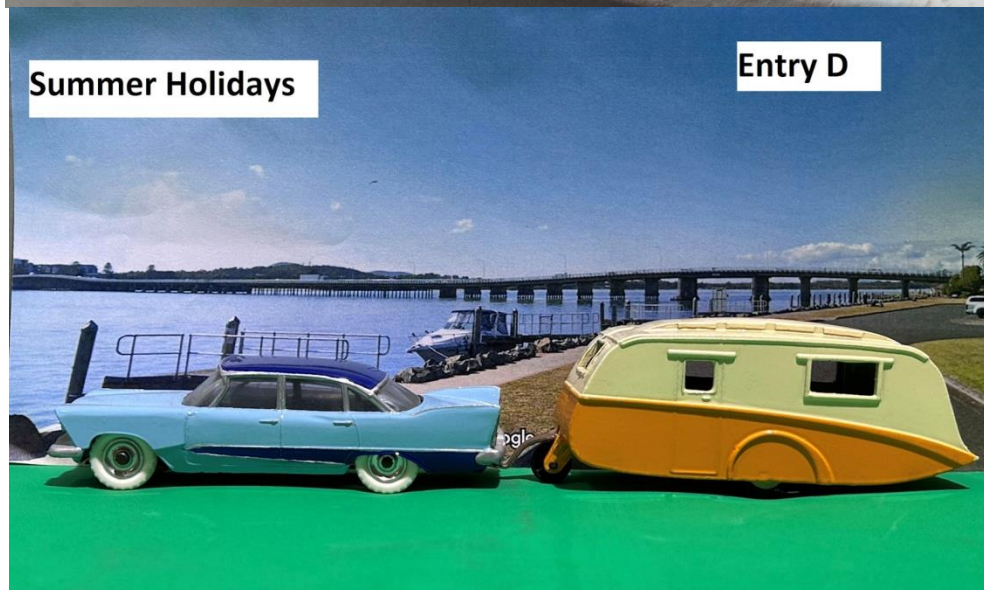
I TRUST THAT YOU HAVE HAD A VERY GOOD CHRISTMAS AND WISH YOU AND YOUR FAMILIES A HAPPY AND HEALTHY NEW YEAR AHEAD IN 2025..... Bill Kenchington, Secretary



This is the \$2 Hot Wheels version of the Porsche we discussed in December (sans Xmas tree)

PLACEGETTERS FOR THE DECEMBER 2024 VIRTUAL MODEL COMP.

***** Category - 'VEHICLE ASSOCIATED WITH CHRISTMAS' *****



----Cataloguing Your Collection, part 1----

As this is my first magazine as editor I thought I'd detail how I catalogue my collection. I suppose you could put the process into three broad steps.

Step 1, listing what you have,

Step 2, listing everything that has been released,

Step 3, creating a variation guide of each version of a model released

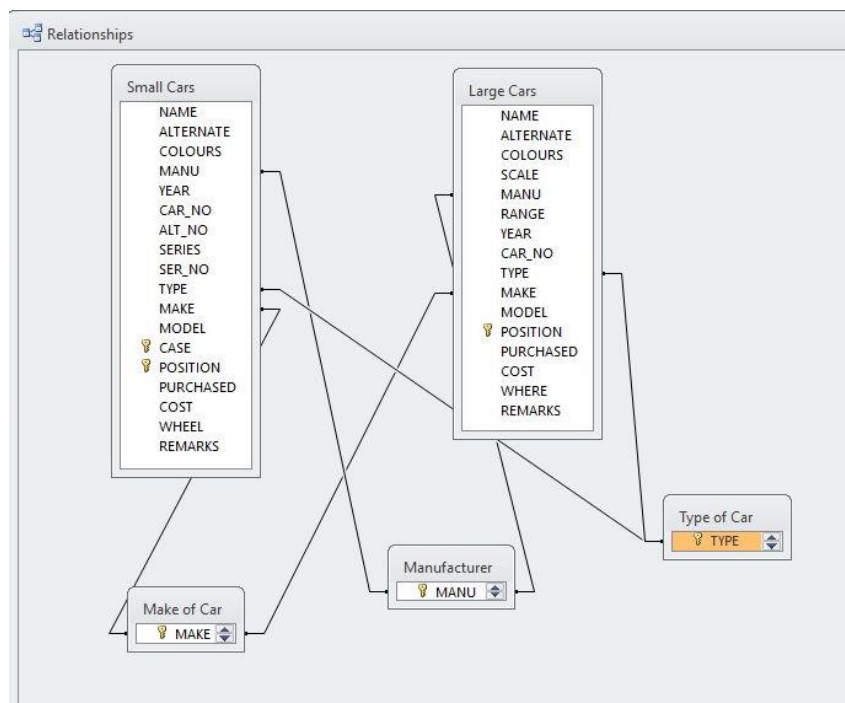
So in this article I'll just be covering the first step.

When I was much younger I put my Matchbox cars back into my car case when I finished playing with them. There was no set order, they were just put back in randomly. At some point in time I decided to put them back in the same location in the same case each time. So I set up a hot wheels track. I then ran all the cars down the track and the one went furthest distance was put in position #1, and so on. And what was #1, an Alive '55 Hot Wheels redline. This was closely followed by a Corgi whizzwheels and then a Matchbox superfast. From then on the cars were just added to the end of the case in order of purchase.

My first lists were hand written, as that and typing were the only two choices. When I purchased my first computer in the early 1980s I got a database program called Q&A. The information was entered in there so I didn't have to keep re-writing it every time. Eventually I converted across to Microsoft Access, and over time I progressed to various versions of that program.

I know that some people use spreadsheets to list their cars, I'm sure this works just as well. To me the advantage of the database program is the ability to get information out by queries and generate reports. For example I can find all the Matchbox 1-75 cars that were released in 1998, and list them according to their model number.

The information is entered into tables, but I do this by more user friendly 'forms'. There are five tables used. The picture below shows the tables and their relationship to each other.



1 - 'small' cars, 1-75 matchbox size

2 - 'large' cars, large sized model cars

3 - manufacturer, e.g.. Hot Wheels/ Matchbox/ Trax etc

4 - make, e.g. Ford/Holden/ Dodge


5 - type of model, e.g. Car/ Boat/ SUV/ 4WD/ Taxi/ Rescue

Tables 3/4/5 are used as links so you get the same entry each time. For example if when entering the make you type in **Hol** it populates the entire field with **Holden**.

The 'small' cars table is for the Matchbox/Hot Wheels sized cars. These are the first cars I had and they were stored in Matchbox 48 car cases. Thus the entry has a case number and also a position. This combination must be unique as you can't have two cars in the same place.

SMALL

Name:	SS Commodore (VT)	Alternate:	Hyper Jones	
Colour(s):	Dk Red, Black\$, White	Manufacturer:	Hot Wheels	Year: 2000
Car No:	57224	Coll No:	D087	Series: 2003I Carbonated Cruisers
				No: 03
Type:	Car	Make:	Holden	Model: Commodore VT
Case:	10	Pos.:	46	Purchased: 26/08/2003
				Cost: \$2.69
				Wheels: EN
Remarks:	"Hyper Jones, Crazy Chef, Soda".			



Name: the name actual name of the model on the box/card

Alternate: any other writing/ car number on the model

Colour(s): self explanatory (\$ if interior colour)

Manufacturer: who made it [links to another table]

Year: on the base

Car No: for hot wheels is five digits, for matchbox 1-75 number

Coll No: if applicable, for hot wheels collector numbers, for matchbox five digit mattel number

Series: name if it's part of a series

No: in the series

Type: style of car [links to another table]

Make: the real car maker [links to another table]

Model: specific details about the car

Case: car case number

Pos: position in that case

Purchased: date I purchased the car

Cost: self explanatory


Wheels: two digit code for wheels style and symbol for the colouring of the tyres/wheels

Remarks: this allows for any further information on the model car. It mentions if anything open, all markings on the car, if it's new colour for 19xx, if I have a duplicate, plus anything else that might be interesting to me about this specific model.

The second table contains anything 'larger'. This mean 1:18, 1:43, Yesteryear, Convoy Trucks, Skybusters. Basically anything that could not fit into a 1-48 car case. These are catalogued on a single number that runs sequentially.

LARGE

Name:	Chrysler S Series Valiant	Alternate:		
Colour(s):	New Beige, Red\$	Scale:	43	
Manufacturer:	Trax	Range:		Year: 2001
				Car No: TR036B
Type:	Car	Make:	Chrysler	Model: 1963 S-Series Valiant sedan
Position:	193	Purchased:	16/05/2021	Cost: \$23.00
				?:
Remarks:	Original release.			



Name: as before
Alternate: as before
Colour(s): as before
Manufacturer: as before
Range: sub range from manufacturer, e.g. Skybusters, Convoy, Trux
Year: on the base/ first release
Car No: if the model has one
Type: as before
Make: as before
Model: as before
Position: as before
Purchased: as before
Cost: as before
?: where model is located in display case
Remarks: as before

If I was starting from scratch these could be combined into one table. But it would be extremely difficult to make that change now, as I would also have to alter all the corresponding documents that reference this number. So that concludes part one of the article. Stand by for parts 2&3 in future issues. *David Standen.*

IXO vs Trax



The pictures show a comparison of the 2024 IXO release (left) and the Trax 1994 twin set release (right). The first thing I noticed is that the Trax release did not have the reverse bonnet scoop, but had a fuel filler on the hatch. The IXO casting has a larger rear window as you can see in the picture above. Obviously the detail in the IXO release is better, but the Trax version is still good 30 years after its initial release.



----2004 Maserati MC12----

The MC12 began as a project to go racing in the FIA GT championship. Maserati had not officially been racing for 37 years, and in order to race in FIA GT you needed 25 road cars to be made.

Thus the numbers made were very low. With a list price of £500,000 the number of potential buyers queueing up probably wasn't very high. There were 25 made in 2004, and a further 25 cars made in 2005, albeit 150mm shorter to allow for the FIA rule changes. The colour is white with blue trim, as a tribute to a racing team from the 1960s.

The majority of the engine, drivetrain, chassis and other major components were sourced directly from the Enzo Ferrari. Externally only the windshield was shared with the Enzo. The MC12 is 300mm longer, and also wider and has a much lower drag co-efficient. The dimensions were 5143 long, 2096 wide, 1205 high. Wheelbase was 2800, with an overall weight 1500kg. The Enzo Ferrari offered quicker acceleration, shorter braking distance, and could do 350kph.

The engine used was a Ferrari V12 5,998cc engine putting out 463kw of power and 652nm of torque. It was a mid-rear layout, leading to 41% front 59% rear weight distribution. The car used a 6 speed sequential gearbox with a twin plate dry clutch to get all that power to the road. Times were 0-100 in 3.8sec, with a terminal speed 200kph. Standing kilometre was done in just 20.1 sec. Top speed was around 330kph.

Wheels were 19 inches, 9" wide front 13" wide at back. They use Pirelli P Zero's, 245/35ZR19 front 345/35ZR19 rear. Stopping was done via Brembo brakes with a Bosch ABS. The wheels were unique with centre locking nuts (like you find on a current race car). Interestingly the nuts were different colours on either side. Red for the driver and blue for the passenger.

Although it sported a targa roof, there was nowhere to actually store it in the car. Also you can't see out of the rear window because of the engine intake. Makes it a bit hard when you're trying to reverse park at Aldi. The interior was gel coated carbon fibre, and blue leather. It did get a Maserati analogue clock and a blue ignition button. There was no car stereo, or even a place to put it. There was also a button that allowed for the car to be raised at speed bumps. [\(pic courtesy of Romans International\)](#)



GT1

For racing the weight was decreased to 1,250kg, and of course the power output increased. Late in 2004 it started winning races, culminating with car winning the 2005 FIA GT teams championship.

Eventually the car was allowed to race in the American Le Mans series. The weight went down even further to 1,200kg, and the nose was shortened a further 201mm. The car was still 66mm too wide to be homologated, so it was allowed to compete but could not score points.

The car continued racing up until 2010 in such areas as Super GT, and the Italian GT series. (pic courtesy of [Automobilist](#))



Versione Corse

In 2006 a limited production version was produced for drivers looking for the ultimate track experience. The changes made it illegal to drive on the road, similar to the Ferrari FXX. It was kept by Maserati and transported to you when you wanted to drive it on the track. There were only 12 of these cars made.

It was based on the GT1 version with same modified rear wing and the shortened nose. The engine puts out 555kw, 90 more than standard road car. The V12 engine was slightly more powerful than the GT1 as it was as not limited by intake air restrictors. There was no ABS. 200kph happened in just 6.4 seconds.

It came in single colour of Blue Victory but at this sort of price you could choose any colour. I have seen a picture of a bright orange one as well. (pic courtesy of [Reddit](#))



The Model Cars

In 1:18 scale there are releases from both Hot Wheels and Autoart. The Hot Wheels version was released in the correct factory colour. Autoart did three versions. They did the original factory colour, the race version for 2010, and the Versione Corse colour. However, the last version had the road cars' rear wing not the correct racing version. The picture below is of 1:18 and 1:64 both from Hot Wheels.



In 1:43 a few of the GT1 racing versions have been done. This been released by both Spark and IXO. The IXO version appears to be available in five different liveries.

In ~1:64 there are releases by Hot Wheels, Kyosho, BBR. Kyosho is the factory colour while the BBR release is dark blue with a white centre stripe. It has only been released twice by Hot Wheels. As a first edition in 2005 (white), and a mystery model in 2007 (dark blue). *Dave S.*



These are the latest two IXO releases 14&15. #16 (a VK Commodore SS Group A) should be out by the time you receive this magazine.

---Dragon Racing Team---

In 1988 Matchbox released a series of cars in Hong Kong that was called the Dragon Racing Team. These twelve cars reference the twelve Chinese astrological signs

The zodiac animal is the year you are born (on the Chinese calendar) and rotates through the 12 animals. These are often used to describe a person's personality. In order they are (rat, ox, tiger, rabbit, dragon, snake, horse, goat, monkey, rooster, dog, pig). Interestingly when they were released as model cars they were numbered in the opposite order to this.



Although you would class the release as a set, they were actually available individually. The red/yellow window box was unique to this series. The box style was the same as all boxes used in that era with a plastic window so you could see a model, and flaps on the end that had to be opened and did not reseal. All cars used existing castings from Matchbox range.

- | | | |
|---|---------------------|--------------------------|
| 1 | Year Of The Pig | Mercedes-Benz AMG (#135) |
| 2 | Year Of The Dog | Pontiac Fiero (#158) |
| 3 | Year Of The Rooster | Pontiac T-Top (#101) |



- | | | |
|---|--------------------|-------------------------------|
| 4 | Year Of The Monkey | Nissan 300ZX (#167) |
| 5 | Year Of The Goat | Dodge Daytona Z (#127) |
| 6 | Year Of The Horse | Pontiac Firebird Racer (#155) |



- | | | |
|---|--------------------|---------------------------|
| 7 | Year Of The Snake | Toyota MR2 (#163) |
| 8 | Year Of The Dragon | Porsche Turbo (#003) |
| 9 | Year Of The Rabbit | Ferrari Testarossa (#172) |



- | | | |
|----|-------------------|-----------------------------------|
| 10 | Year Of The Tiger | Lamborghini Countach LP500 (#154) |
| 11 | Year Of The Ox | Racing Porsche 935 (#118) |
| 12 | Year Of The Rat | Ferrari 308GTB (#070) |



The models are basically impossible to find as a complete set, because the way they were released. I found mine over a period of about five years in groups of 2 or 3. [Dave S.](#)